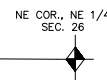


SCALE 1"=100'



SEE PAGE 101

SEE PAGE 101

SEE PAGE 283

ALL PUBLIC UTILITY & DRAINAGE  
EASEMENTS ARE 7.0' WIDE ON  
EACH SIDE OF PROPERTY LINES  
AS INDICATED BY DASHED LINES

FOR COMPLETE ENG DATA SEE  
ORIGINAL DEDICATION PLAT  
IN BOOK 22, PAGE 79

SEE PAGE 101